

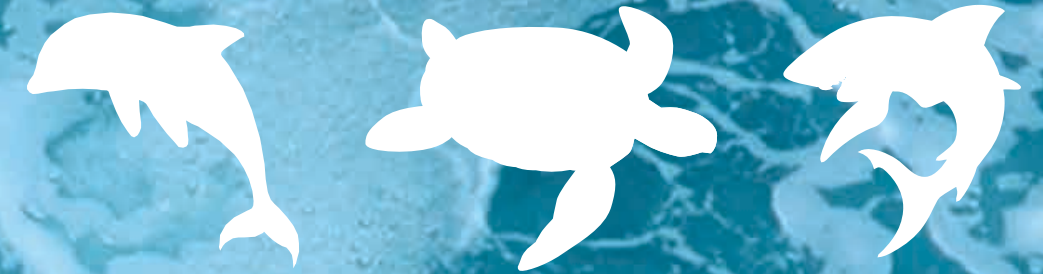


Tanks and hydrophores SHARK, DOLPHIN, TURTLE



CATALOGUE
04/2016

SHARK, DOLPHIN, TURTLE



SHARK

Water tanks, with capacity range from 100 to 3000 litres. Bigger on demand up to 30.000 litres. Most of the marine certificates possible.

- capacity from 100 to 3000 litres
- designed pressure: 10 bar
- working pressure: 8 bar
- test pressure: 15 bar
- extra ports and inspection openings are plugged
- working temperature: 5 to 50°C
- all connections are BSP inside threaded
- extra option: all connections flanges
- hot zinc galvanized
- water level indicator included



TURTLE

Skid mounted unit with marine water pumps, electric box, piping and regulation panel (manometers, presostats, safety valves)

- all mounted on common skid
- two pumps working separately
- Most well-known pump producers possible
- 3 x 400V 50Hz or 3 x 440V 60Hz
- aluminium or stainless steel skid
- all connected electrically and hydraulically
- pressure tested
- stainless steel piping
- metal electric box in standart
- 4 manometers, 1 presostat and safety valve in standart
- safety valve included



DOLPHIN

Air tank, with capacity range from 100 to 3000 litres and pressure up to 15 bar. Bigger on demand up to 30000 litres. Most of the marine certificates possible.

- capacity from 100 to 3000 litres
- designed pressure: 11 bar
- working pressure: 10 bar
- test pressure: 16 bar
- extra ports and inspection openings are plugged
- working temperature: -10 to 50°C
- all connections are BSP inside threaded
- extra option: all connections flanges
- standard blue color (any other color on demand)

APPLICATION:

TURTLE

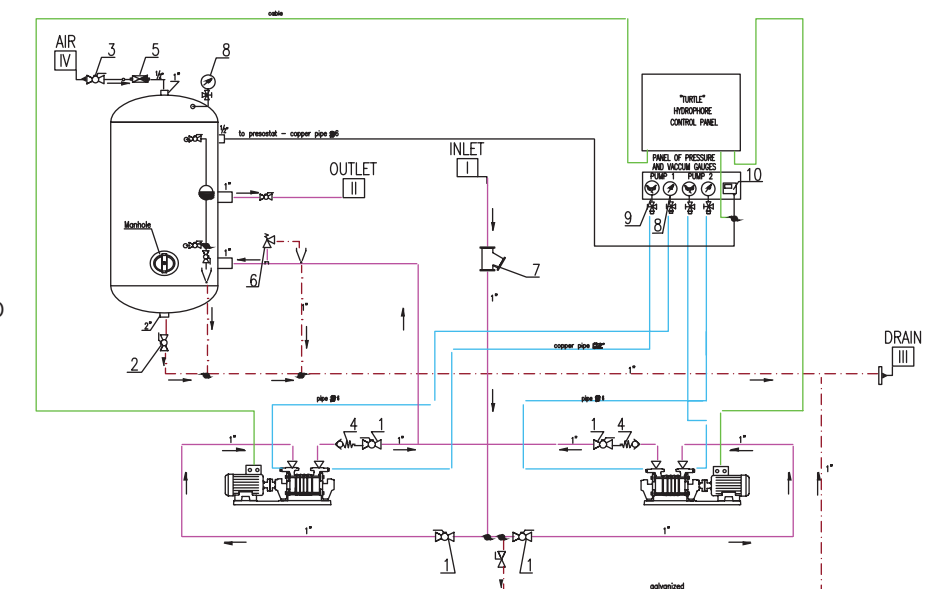
- store the fresh water
- store the sanitary water
- store the salt water
- boosting the water
- maintain the pressure of the water supplied to the different parts of the ship

SHARK

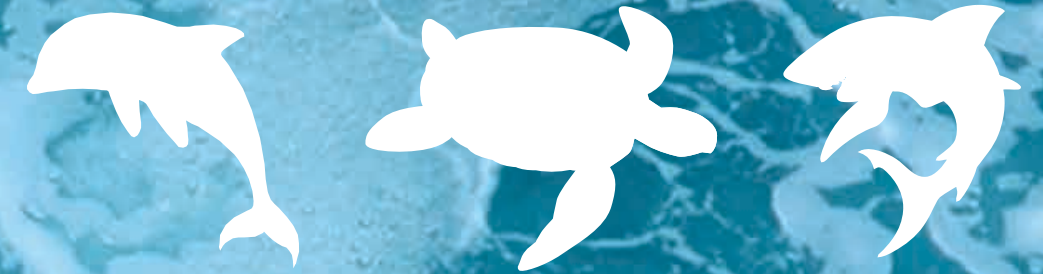
- store all kinds of water

DOLPHIN

- store the compressed air
- store working air
- store control air

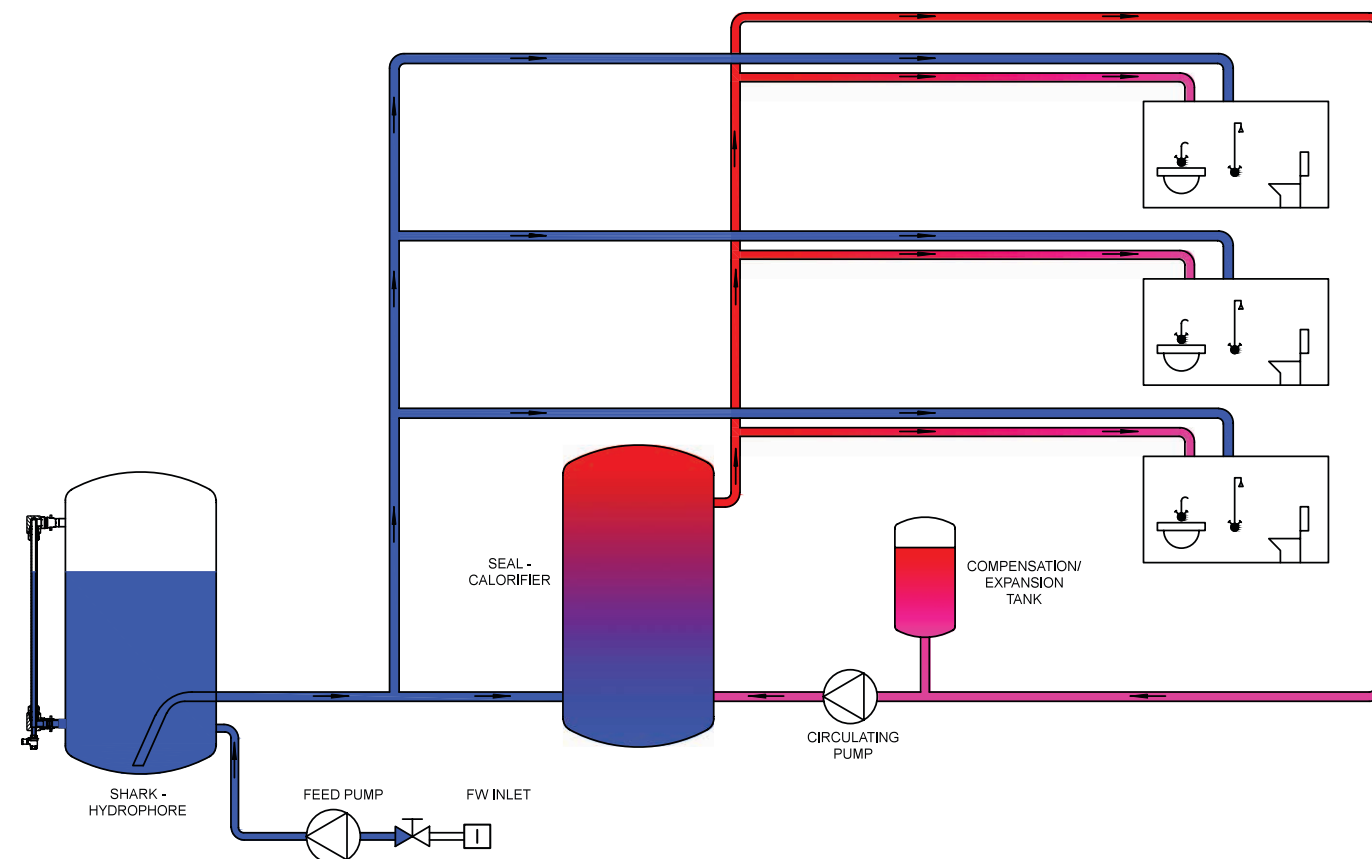


SHARK, DOLPHIN, TURTLE



FLOW DIAGRAM

In order to properly understand the need of our products we have created a diagram, which shows a proper placement of the hydrophore and heater in the ship's domestic water system.



CERTIFICATION

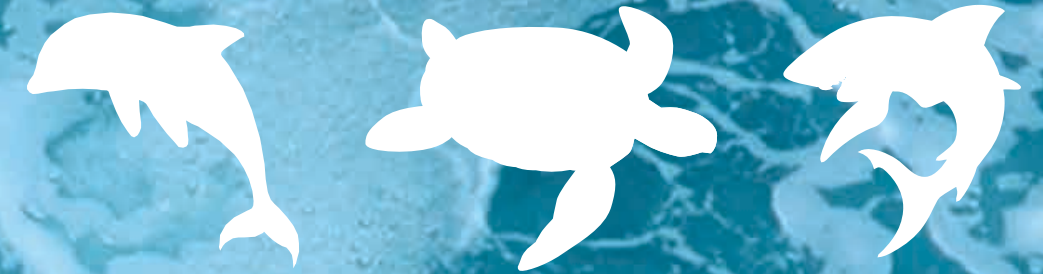
Our services include proper handling the certification process.

We have made tanks with various marine class certification like DNV-GL, BV, LLOYD, ABS, RINA, ASME, U-STAMP, RRR, RMRS and others.

In order to make things simpler and quicker, we decided to make a type approval under RRR class and we are in the process of being approved by DNV-GL as Approved Manufacturer.



SHARK, DOLPHIN, TURTLE

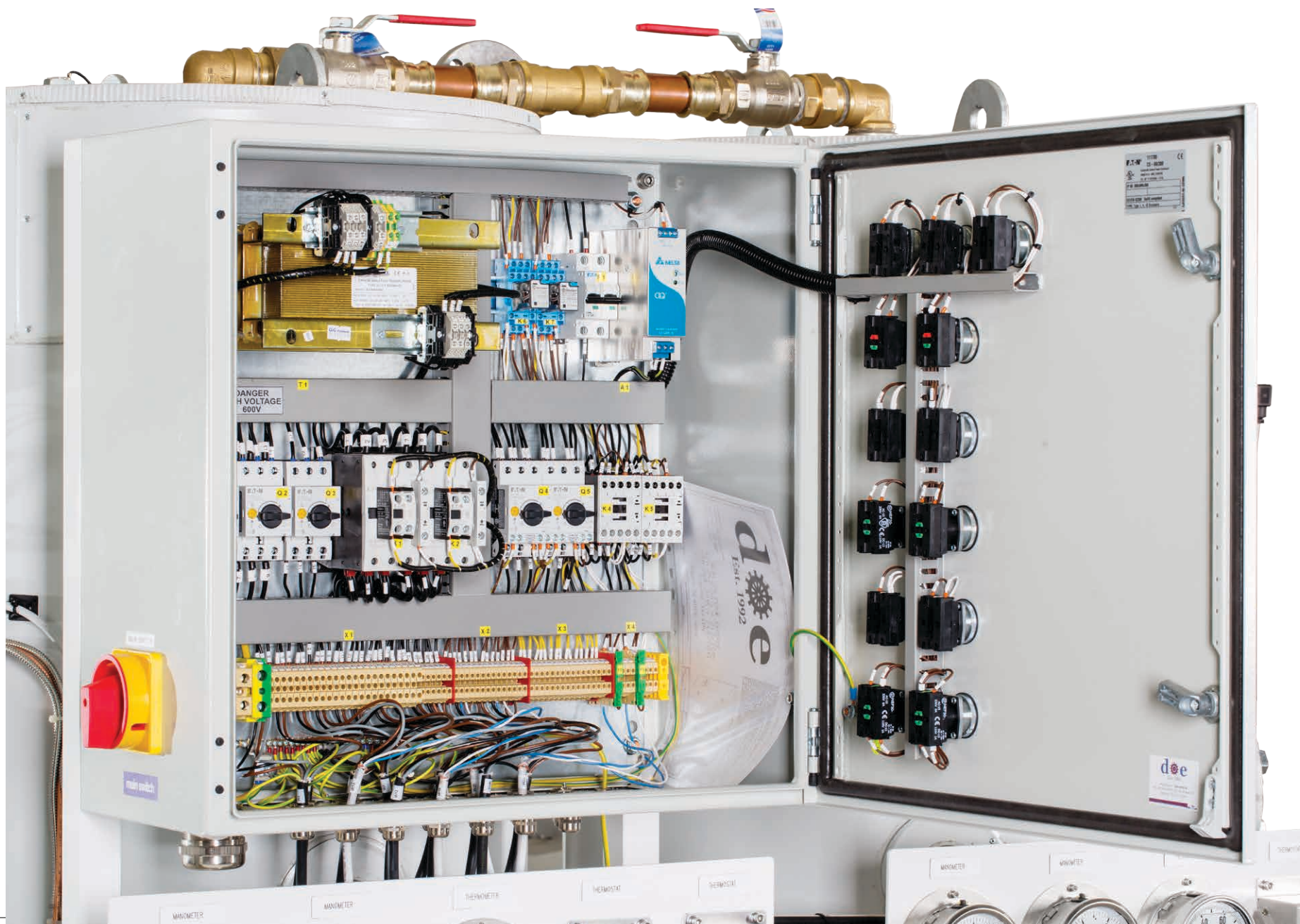


ELECTRICAL

Our machines are basen on simplest electric controls such as contactors, relay switches, thermostats and presostats. That way every electrician on board can quickly reappear damage. You don't need to wait for our service!

There are no complex CPU based elements.

In rare ocasions we do make computer controlled units on client's request.

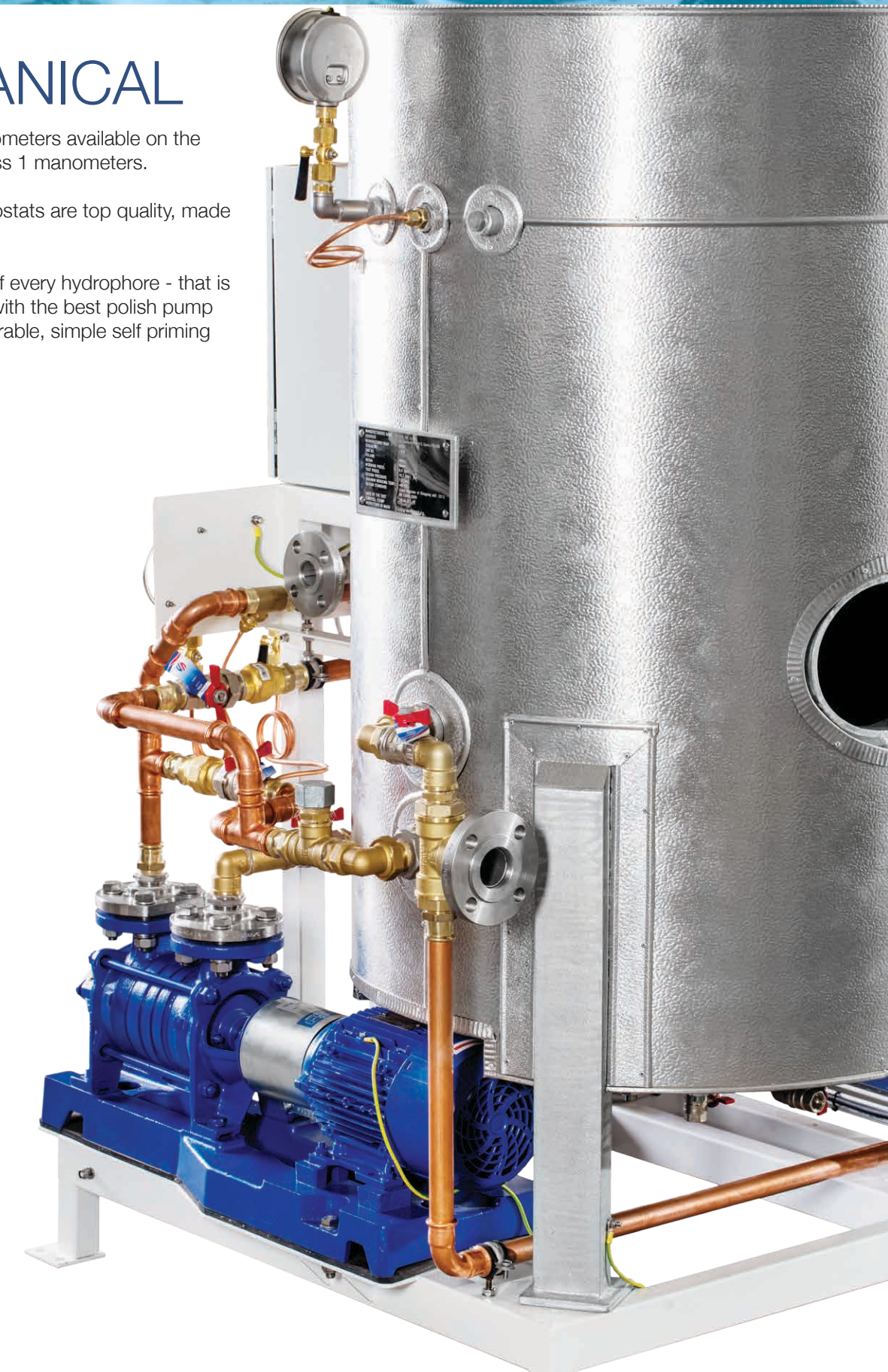


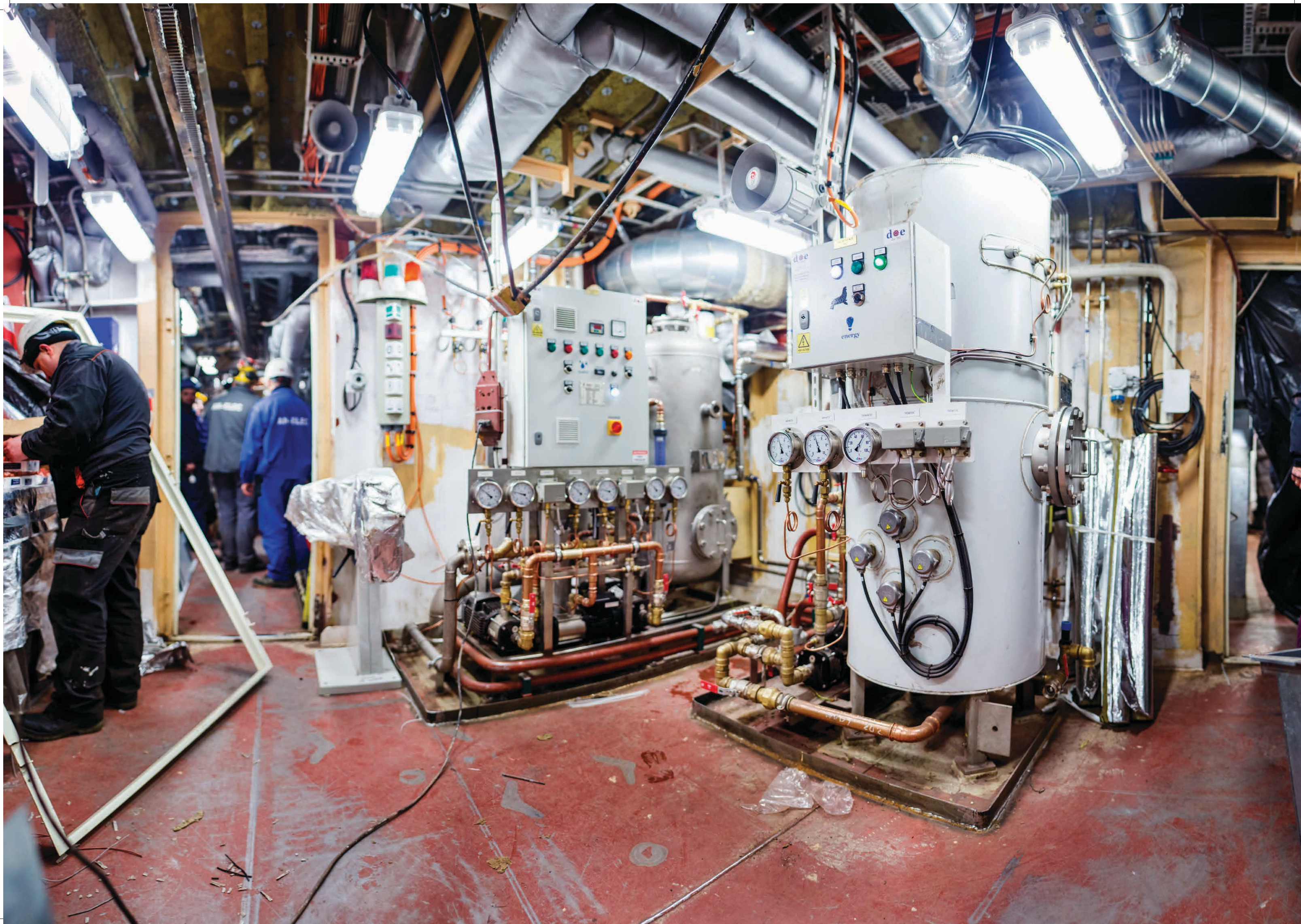
MECHANICAL

We use the best manometers available on the market. These are class 1 manometers.

Presostats and thermostats are top quality, made by Danfoss.

Pumps are the heart of every hydrophore - that is why we work closley with the best polish pump maker, who makes durable, simple self priming pumps.







TANK CAPACITY: 500, 100L
 TANK TYPE: VERTICAL TANK
 MATERIAL: STAINLESS STEEL ANSI 316L
 TANK CERTIFICATE: DNV-GL
 WORKING PRESSURE: 6 BAR



TANK CAPACITY: 2x 500L
 TANK TYPE: VERTICAL TANK
 MATERIAL: BLACK STEEL GALVANIZED
 TANK CERTIFICATE: N/A
 WORKING PRESSURE: 6 BAR
 PUMPS: 2x SELF PRIMING PUMPS



HYDROPHORE SYSTEM 200L
MINERALIZER DODO 300L
SHARK TANK 200L
UV DISINFECTION CONSTANT FLOW MACHINE (SEAHORSE)
DNV CERTIFICATE
STAINLESS STEEL (SS)
COMPLETE PIPING, COMMON SKID
TWO PUMPS 3,5 M³/H
ONE SELF PRIMING PUMP, WORKING PRESSURE 5 BAR



HYDROPHORE SYSTEM 1500L
TURTLE TANK 1500L
DNV CERTIFICATE
STAINLESS STEEL (SS)
COMPLETE PIPING
COMMON SKID
PUMPS WITH TWO ADDITIONAL 10M³/H EJECTORS
WORKING PRESSURE 6BAR



TANK CAPACITY: 200 L
 TANK MATERIAL: GALVANIZED BLACK STEEL POWDER PAINTED
 WORKING PRESSURE: 2 BAR
 DESIGN PRESSURE: 6 BAR
 LEVEL INDICATOR WITH SHUT OFF VALVE
 ADJUSTABLE SAFETY VALVE WITH BV CERTIFICATE
 MANHOLE, WATER INPUT/OUTPUT CONNECTIONS ACCORD. TO REQUISITION
 TWO SPECIAL INTERFACE FOR INSTALLATION OF LEVEL SWITCHES FROM SART
 BV CERTIFICATE FOR TANK INCLUDED



2X HYDROPHORE SYSTEM 100L
 A77 PUMP
 DNV CERTIFICATE
 STAINLESS STEEL (SS)
 COMPLETE PIPING
 COMMON SKID
 ONE SELF PRIMING PUMP
 WORKING PRESSURE 5BAR



TYPE: VERTICAL, CYLINDRICAL
 CAPACITY: 300 LITRES
 MATERIAL: BLACK STEEL, GALVANIZED
 COMMON FRAME (SKID) MADE OF STAINLESS STEEL TYPE: AISI 304
 SELF-PRIMING PUMP, 3 m³/h, 5 BAR – 2 PCS.



TYPE: VERTICAL, CYLINDRICAL
 CAPACITY: 600 LITRES
 MATERIAL: GALVANIZED BLACK STEEL
 WORKING PRESSURE: 5 BAR
 COMMON FRAME (SKID) – 1 PC
 ELECTRICAL BOX (CONTROL CABINET) FULLY EQUIPPED
 PROTECTION: IP55 04
 SELF-PRIMING PUMP TYPE 4.5 m³/h, 4 bar – 2 PCS



STAINLESS STEEL TANK , CAPACITY: 400 L. WITH LEVEL INDICATOR SS
 WORKING PRESSURE: 4 BAR
 2 PCS. OF SELF PRIMING PUMP
 SPECIAL EXECUTION FOR SAL WATER,
 BODY AND IMPELLERS MADE OF BRONZE WITH MECHANICAL SEAL
 CONTROL PANEL (PRESSURE GAUGES, PRESOSTAT)
 PIPING MATERIAL – SS 316 INCLUDING VALVES, NON RETURN VALVES AND SAFETY
 VALVES, MOUNTED ON FRAME
 CLASS CERTIFICATE RMRS



TYPE: VERTICAL, CYLINDRICAL
 CAPACITY: 300 LITRES
 MATERIAL: BLACK STEEL, GALVANIZED
 COMMON FRAME (SKID) MADE OF STAINLESS STEEL TYPE: AISI 304
 SELF-PRIMING PUMP, 3 m³/h, 5 BAR – 2 PCS.



TYPE: VERTICAL, CYLINDRICAL
CAPACITY: 300 LITRES
MATERIAL: STAINLESS STEEL 316
COMMON FRAME (SKID) MADE OF STAINLESS STEEL TYPE: AISI 304
SELF-PRIMING PUMP, 3 m³/h, 5 BAR – 2 PCS.



TYPE: VERTICAL, CYLINDRICAL
CAPACITY: 300 LITRES
MATERIAL: BLACK STEEL, GALVANIZED
COMMON FRAME (SKID) MADE OF STAINLESS STEEL TYPE: AISI 304
SELF-PRIMING PUMP, 3 m³/h, 5 BAR – 2 PCS.



TANK TYPE: VERTICAL, DIAPHRAGM TYPE
TANK CAPACITY: 400 L
TANK MATERIAL: BLACK STEEL, HOT GALVANIZED
TANK CERTIFICATE: LRS
WORKING PRESSURE: 6 BAR
MINERAL WOOL 20mm INSULATION
2x SELF-PRIMING PUMPS 2,5 m³/h / 6 BAR
PUMP TYPE SELF PRIMING (SIDE CHANELL TYPE)



SEPARATE EXECUTION OF STAINLESS STEEL SKID WITH ALLWEILER PUMPS WITH
EJECTORS AND BLACK STEEL, GALVANIZED TANKS 3000L

CERTIFICATE: BV



6X HYDROPHORE SYSTEM 100L, EQUIPPED WITH:
TURTLE 100L STAINLESS STEEL (SS 321)
COMPLETE PIPING
COMMON SKID
WORKING PRESSURE 4BAR
POWER INSTALLED 3KW



Contact details:

Address:
DOE Sp. z o.o.
Al. Parku Krajobrazowego 84
84-207 Łężyce, Poland

Visit our web page:
www.doe.pl

Date of establishment: 1992

Tel. +48 58 6643210
Fax. +48 58 6643737

Email: doe@doe.pl

OUR REPRESENTATIVES:

Greece
NAFPLIAKI LTD
10, Andanias Street
Athens, Greece
+30 210 9576474
nafpltd@otenet.gr

Spain
INTERBON S.L.
Avenida Beiramar, 171 - Bajo
36208 Vigo - Pontevedra (Spain)
+34 986 205 712
interbon@interbon.net

Norway
Lars G. Dyrna
+47 95940633

Italy
Stello Bardi SRL
Via delle Primule 101
16148, Genova GE - Italy
+39 010 3760 750/800
<http://www.sb-group.it>

Korea
Mystic Tie Corp.
4th Floor Samchunri Bldg.
689-6 Jeonpo 1 Dong
Busan Jin Gu, Busan 614-869
South Korea
821038756456
wechooljung@gmail.com

Indonesia
PT.Satya Upangga
Nucira Building, 3rd Floor
Jl.Letjend Mt.Haryono Kav.27
Jakarta, 12820 Indonesia
+62 21 8303110
imans_multi@gmail.com

Thailand
Thai Engineering & Services
555/231-2 On-nut Road, Private, Pravate District
Bangkok, 10250 Thailand
+66 (0)2 328 8734-5
sales@tes-company.com

UAE
Airborne Systems FZE
Light Industrial Unit # C-10
Dubai Airport Free Zone
Dubai 54373, U.A.E.
+971 4 299 6900
thilop@airborne.ae

Singapore
Aqua Logistics Pte Ltd
Blk 2 Bukit Batok St. 24
Skytech #02-09
659480 Singapore
+65 6566 5166
aqualog@singnet.com.sg

Singapore
Chase Resource M. Pte. Ltd.
33 Ubi Avenue 3 #08-54
408868 Vertex Tower A
Singapore
+65 6324 5033
jay@chaseresource.com

Russia
Dialog-Technika
Nekrasova str., 17/A, office 4H
St. Petersburg, Russia
+7 (964) 3914900
office@diatex.ru

Russia
Kronstadt LTD.
Business Centre
Jensen House 62 A,
3-rd line V.O
Saint-Petersburg, Russia
+7 (8) 124412999145
leonidg@kron.spb.ru

Russia
Shipmash LLC
Narodnaya St., 5/2, apt. 407
Saint-Petersburg, Russia
+7 (921) 4237785
main@shipmash.ru

Russia
MSC LTD
24th Line, 15/2
St.Petersburg, Russia
+8 (921) 7886612
i.svid@morsudsnab.ru

USA
Curtis Cronkhite
12 Talcott Range Drive
06026 East Granby
USA
+860 6539461
curtcronkhite@aol.com