

SNAIL is a manual side stream membrane filtration for marine use. The installation is “side stream” which means that will not disturb, stop or change operation of the existing system. Snail can be installed on existing system or installed on new buildings.

SAVINGS

- reduced usage of the chemicals
- reduced usage of inhibitors, other added chemicals
- smaller energy consumption on clean system
- reduced cost of maintenance of the system
- better operation of the system (better efficiency)
- longer lifetime of the heat-exchangers valves, other valuable components of the system

ADVANTAGES

- ability to add demi water into the system
- ability to add chemicals like inhibitors acids , detergents
- online control of conductivity of the system (hardness)
- ability to descale the existing dirty system
- visual control of the water transparency

THE EFFECT

- less suspended particles in the water (sand, bacteria)
- less dissolved particles (salts, minerals, hardness)
- less air in the system

APPLICATIONS

- cooling water, closed system (under pressure)
- closed loop water systems
- heating systems as above
- opened system like swimming pool
- boiler water production (water to be added)
- swimming pools
- fountains
- machines cooled by water
- water washing machines stationary (ultrasonic, hi-pressure)



Contact details:

Meeting and correspondence address:
DOE Sp. z o.o.,
Al. Parku Krajobrazowego 84,
84-207 Łężyce, Poland

Tel. +48 58 6643210
Fax. +48 58 6643737

Email: doe@doe.pl

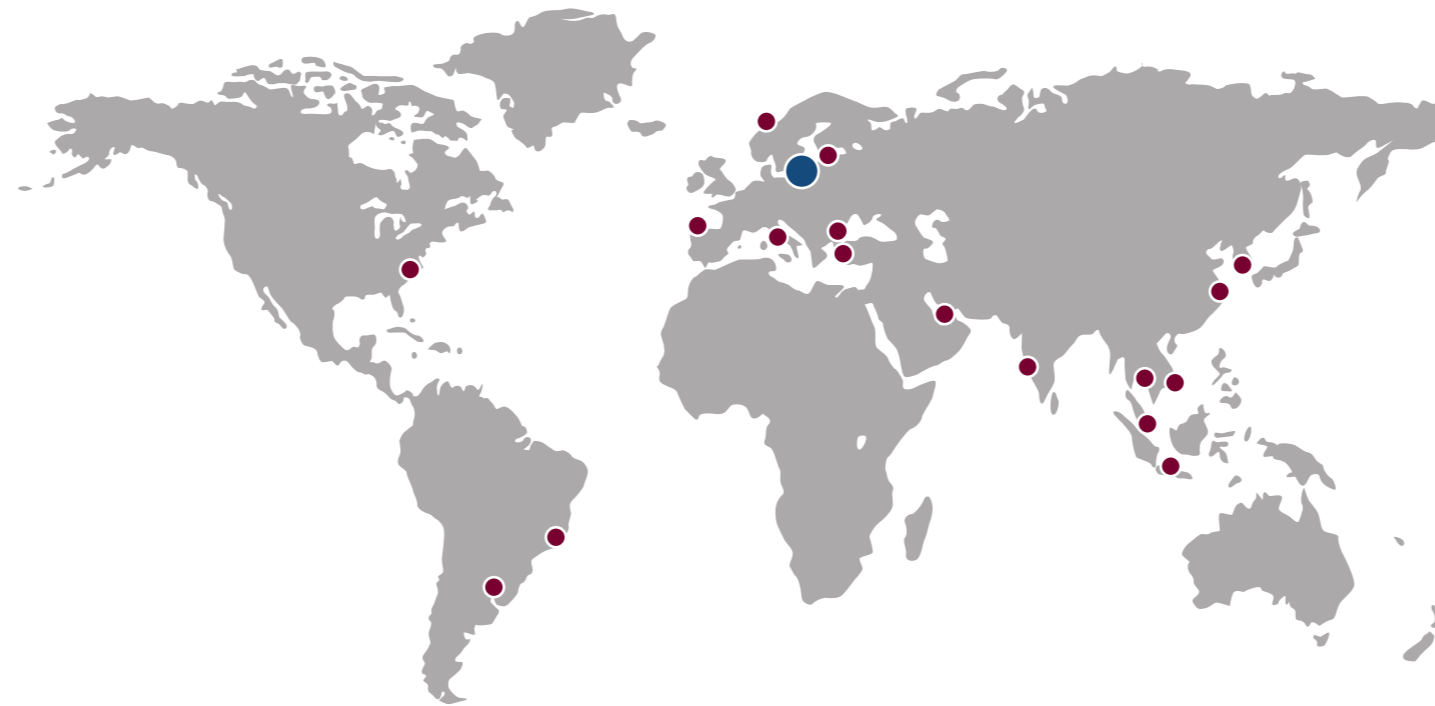
Registration and invoicing address:
DOE Sp. z o.o.,
Sibeliusa 3
81-015 Gdynia, Poland

Visit our web page:
www.doe.pl

Date of establishment: 1992

Local representative details:

OUR REPRESENTATIVES - DOE.PL/AGENTS



THE INSIDE YOUR PIPES

On the left you can see the filter after a month's work. All the suspended particles which a client had in the heating system were accumulated on this filter.

Now, the pipes are free from sand, rust and other particles that were floating in the water. This is however not the end of the job - RO membrane is filtering the water even more accurately - dissolved chemicals are stopped, making your piping system super clean.

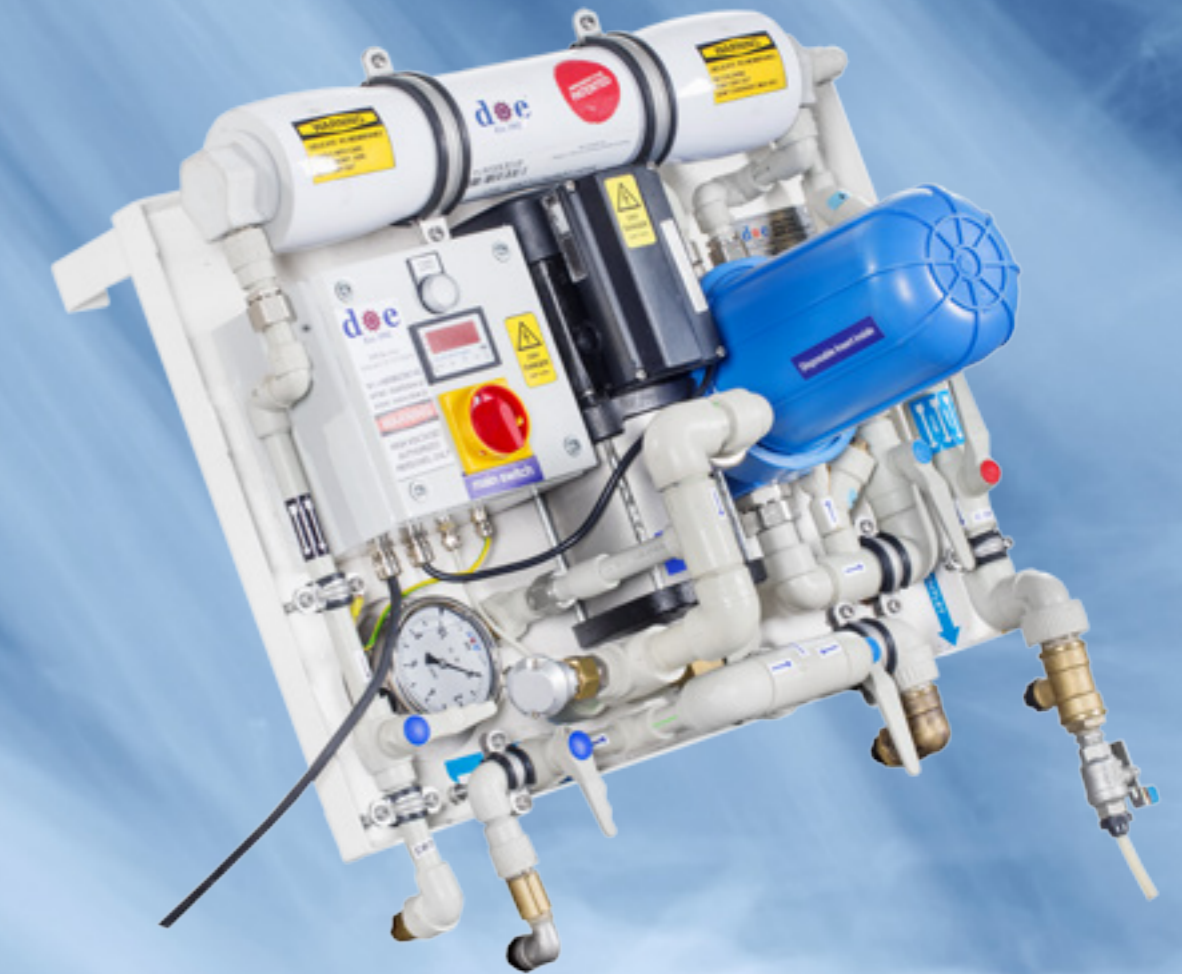
The main benefit is that your system from now on will be working longer without any blockage and problems with the flow.



doe[®]
Est. 1992

SIDE STREAM FILTRATION

SNAIL



SNAIL / SIDE STREAM FILTRATION

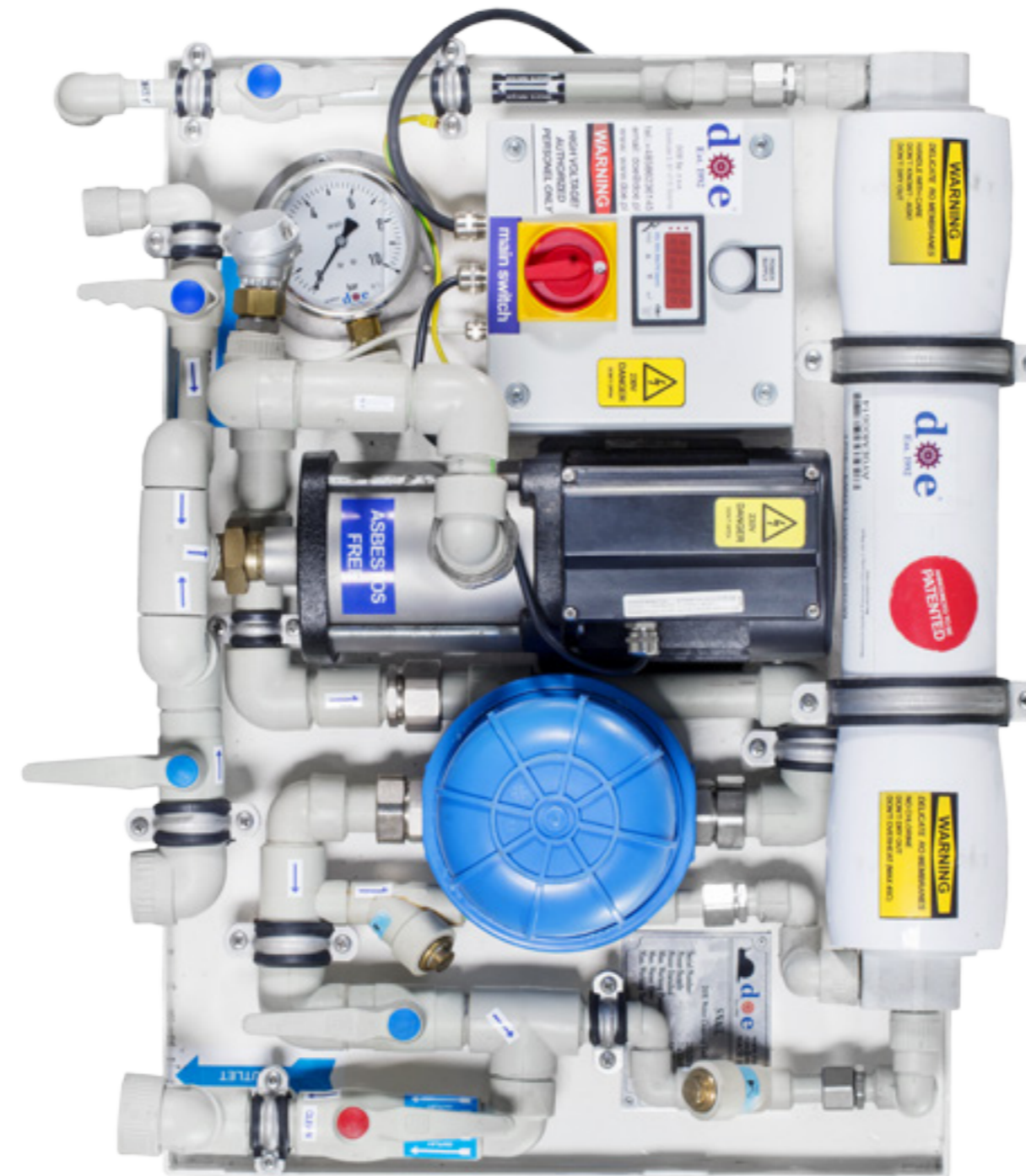
FILTER WATER IN THE CLOSED SYSTEM
230V - 50Hz



TECHNICAL DATA

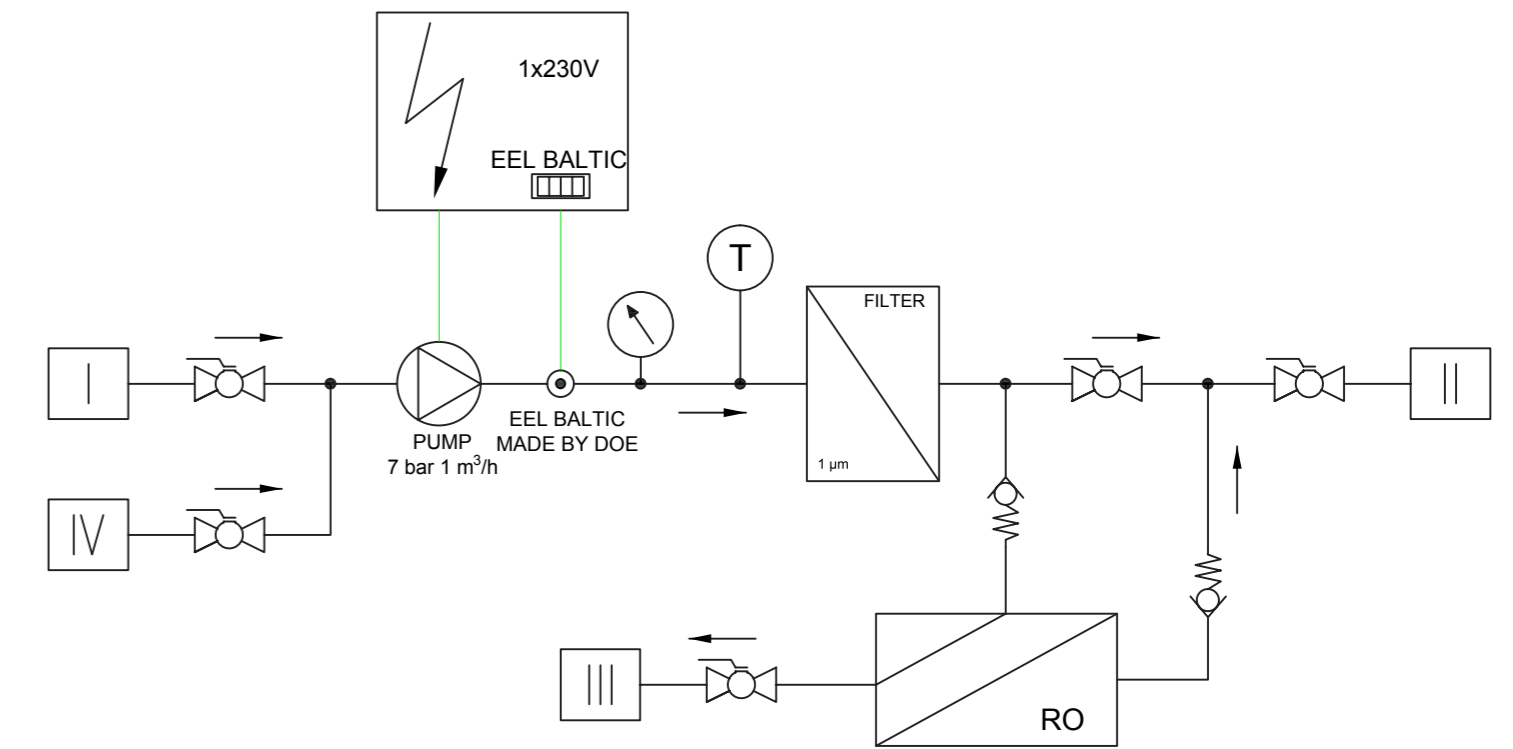
Working parameters, specification

- no chemicals used in the system:
- low working pressure up to 10 bars on the system
- temperature up to 45C (RO membrane inside)
- power supply 500 W, 230V 50hz or 60hz 1 phase, other possible
- easy hand operated system, can be automated
- self regulating system, without possibility to have influence on cleaned system
- drained water consists of charmless minerals and particles
- pending patent solution based on Reversed Osmosis membrane



DIAGRAM

Snail is not a complex machine. Our idea is to make a design as simple as possible so that the cost of production is at a low and acceptable level. All the elements shown in the diagram are manufactured in Europe and the machine is designed and assembled in Poland.



Item	Name of connection	DN
I	PROCESSED WATER – INLET	G 1"
II	PROCESSED WATER – OUTLET	G 1"
III	CONDENSED, REJECTED WATER	G 1/2"
IV	ADDITIONAL FW TO THE SYSTEM	G 1/2"